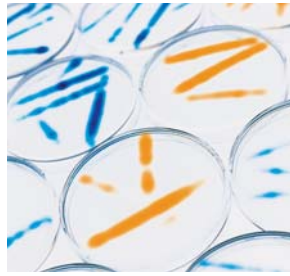




Warehousing

Good warehouse-keeping practices!



More than just flow management

A conventional warehouse management system controls movements and storage of materials within a warehouse. Elan's XFP-Warehousing is a **pharmaceutical-specific manufacturing flows system** offering much more.

XFP makes sure the right quantity of the right material is in the right place at the right time, **from warehouse entry, through work order, to fulfillment and final shipment.**

Totally **21 CFR Part 11 compliant**, with XFP you also benefit from **full traceability of all movements and operations** in real time, right across your organization.

From incoming ingredients to outgoing product

XFP-Warehousing both **manages** and **optimizes** your warehouse and shop floor locations. But it does not stop there. It controls labeling, sampling and storage of raw materials, as well as packaging items, intermediates and finished goods. XFP **dynamically supervises** all your manufacturing logistics and material flows, from warehouse reception to dispatching.

Barcode security, material compliancy

With XFP, containers and pallets of raw materials are labeled at reception, a **unique ID** to accompany the container throughout its life cycle. This barcode incorporates the **static information** on intrinsic properties such as item code, pictograms, etc. **At every production step**, XFP ensures that **every parameter is correct**: lot status, expiry date, potency, etc. In this way, both stocks and compliance are easily managed in real time.

Real time inventory rationalization

Throughout the manufacturing area, every single transaction is **updated in real time** after each consumption and each movement of material. **Intermediates** can also be created and traced in the same way. This enables you to see what's moving at any given moment, and know the real state of your stocks. Because **XFP interfaces with your ERP system**, your ERP is also updated in real time, giving you the **real material flows**.

Key benefits

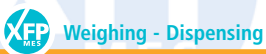
- Optimized material flows
- Inventory updated in real time
- Reduced manufacturing costs
- Integrated manufacturing controls
- Comprehensive materials tracking
- Excellent quality compliance

XFP-Warehousing provides

- Location & stock optimization ■
- Barcode & labeling system ■
- Lot status management ■
- Container management ■
- Radio Frequency technology ■
 - Electronic Picking List ■
- Pharmaceutical sampling rules ■
 - Reservation of lots ■
 - FIFO, FEFO, Kanban rules ■
 - 21 CFR Part 11 compliance ■
- Full traceability and audit trail ■
 - Easy ERP, LIMS interface ■

Elan Software Systems is a global company with Headquarters in the US and Europe.

We have over 20 years of experience in designing and integrating MES solutions for regulated manufacturers worldwide. Today, 7 of the world's top 10 leading pharmaceutical groups operate our solutions across 16 countries.





Smart shop-floor logistics for regulated industries

XFP-Warehousing: intelligent, user-friendly, efficient

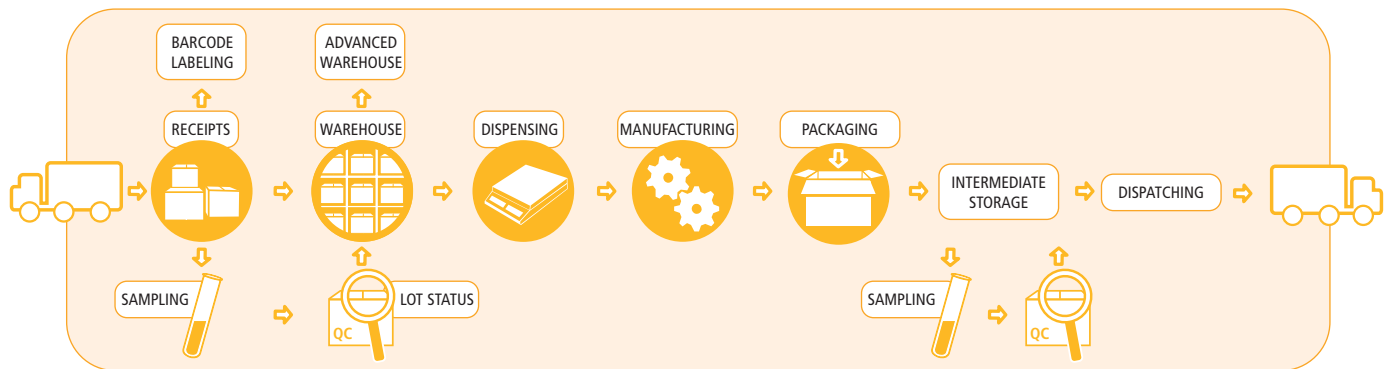
XFP's advanced warehouse management and material flows system secures your manufacturing, and makes your shop-floor operations more flexible and responsive to market demand.

XFP manages receipt, labeling and sampling of all types of materials. All materials input and all plant-floor locations are **individually barcoded**. So no more operator-consuming labeling with error-potential color codes, etc.

XFP optimizes your logistic flows, while securing quantity and quality controls. XFP generates an Electronic Picking List to give you a **clear vision over several picking orders**. It leaves hands free for picking and increases supply flexibility. It also eliminates re-copying entries, and increases productivity.

XFP pilots the supply of materials as per your different work orders. All operations, from reception to batch release are **available on mobile devices**. This offers optimum flexibility to your operators, and real-time management of your processes.

XFP allocates specific lots to specific work orders. XFP **freezes the process ingredient quantities** for each product recipe, guaranteeing total availability for the batch in production. Indeed, because XFP-Warehousing manages and controls the batches, it is a crucial system to all your manufacturing process.



Flexible Stock Management

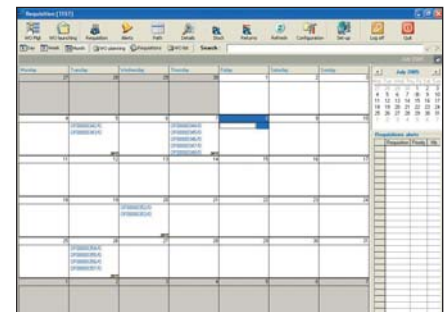
- Location specifications: cold room, secure, etc.
- Location algorithm proposal for storage
- Location storage capacity
- Management at container level
- Inventory

Receipt & Lot Tracking Management

- Labeling rules, and printing of all useful information:
 - Pictograms, storage and handling precautions, risk and safety warnings
- Sampling rules, and follow-through of container sampling operations
- Lot status: XFP links the status and expiry date to each lot

Production Materials Management

- **Lot allocation:** Identifies the lots for production, packaging
 - Manual or automatic reservation as per defined rule: FIFO, FEFO, etc.
- **Requisition:** Generates missions to move the materials
 - Pulled flow requests directly from the warehouse
- **Delivery:** Processes these missions to move the materials
 - Displays missions on Radio Frequency terminals
 - Identifies containers and locations by barcode scanning



Shipping Management

- Customer management, packaging calculations
- Preparation form management

www.elansoftware.com

mesolution@elansoftware.com